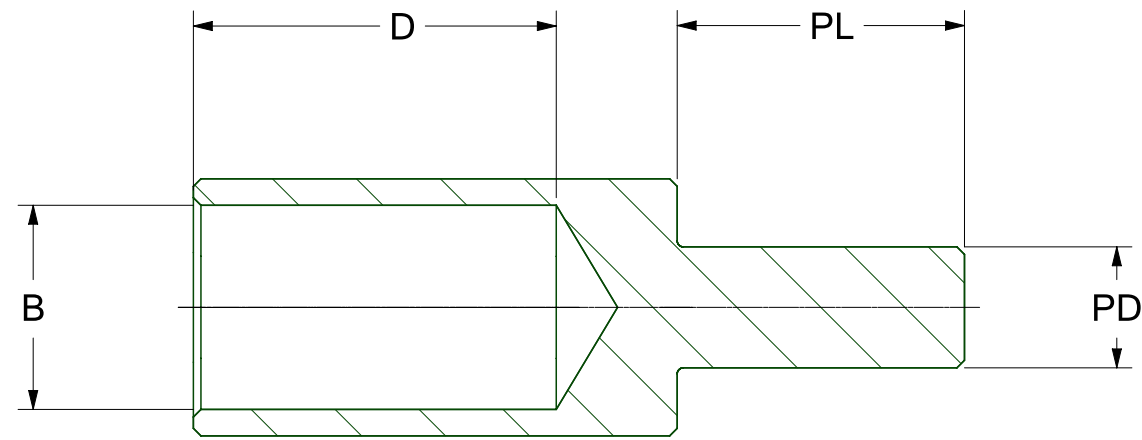


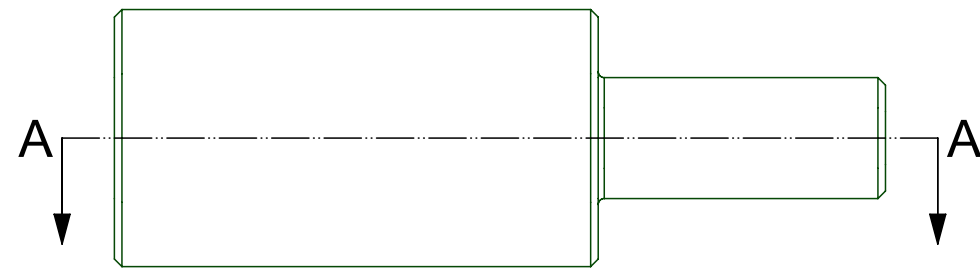
REVISION HISTORY	
1	Original Part
2	Various table dimension updates



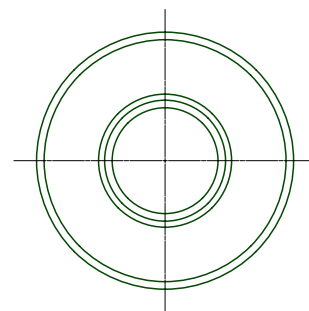
SCALE 1:1



SECTION A-A



SCALE 2:1



PART NO.	B (mm)	D (mm)	PL (mm)	PD (mm)
TCRP-6	4.1	11.0	16.0	2.0
TCRP-10	4.4	10.0	10.0	3.8
TCRP-16	5.6	11.0	13.0	3.8
TCRP-25	7.0	12.0	19.0	5.0
TCRP-35	8.2	12.0	19.0	5.0
TCRP-50	9.5	18.0	19.0	7.5
TCRP-70	11.5	18.0	19.0	8.0
TCRP-95	13.5	20.0	19.0	8.0
TCRP-120	19.0	24.0	24.0	10.0
TCRP-150	16.5	27.0	24.0	10.0
TCRP-185-8PD	18.5	30.0	25.0	8.0
TCRP-185-12PD	18.5	30.0	25.0	12.0
TCRP-240	21.0	32.0	25.0	14.0
TCRP-300	23.0	42.0	32.0	16.0
TCRP-400	27.0	43.0	56.0	15.0

UOS - LINEAR TOLERANCE PERMISSABLE DEVIATIONS FOR SIZE RANGE:
Tolerances according to DIN ISO 2768 (V)

DIMS IN MM	0.5 to 3	>3 to 6	>6 to 30	>30 to 120	>120 to 400	>400 to 1000	>1000 to 2000	>2000 to 4000
	-	±0.5	±1.0	±1.5	±2.5	±4.0	±6.0	±8.0



Total Connections 2009 LTD

www.tc2009.co.uk
sales@tc2009.co.uk
Tel 01249 812 707

Drawing No. TCDR1939

Material. CW004 (C101) COPPER

Part No. TCRP-RANGE

Finish. 5MICRON ELECTRO TIN PLATED

SIZE A3 Date 24/03/2021

Created By: Dan Hewlett

REV 2

SCALE 2:1

SHEET 1 of 1